

## Integra<sup>®</sup> MicroFrance<sup>®</sup>

### Laparoscopic Instruments for Gynecology Procedures\*

Designed with world-renowned surgeons, MicroFrance Laparoscopic Instruments are known for quality and precision. These instruments are designed to perform for a variety of laparoscopic procedures.

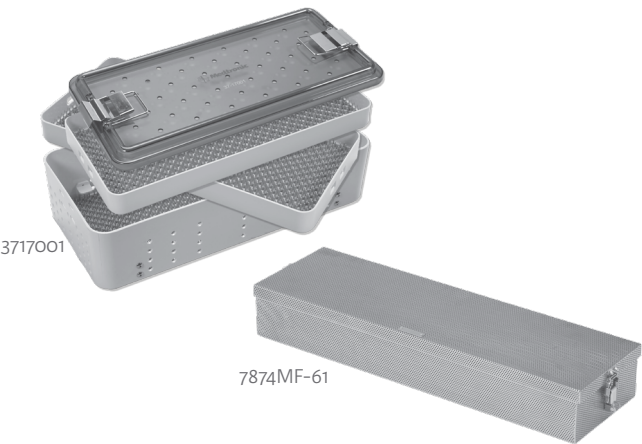


\*Instruments under the medical grouping can be used in other general surgical procedures.

# Gynecology Procedures

## Instrument Trays

Reference	Description
3717001	3-Level Aluminum Tray with Plastic Lid, 53cm L x 25.5cm W x 15cm D
7874MF-61	Stainless Steel Tray, 648mm x 187mm x 96mm

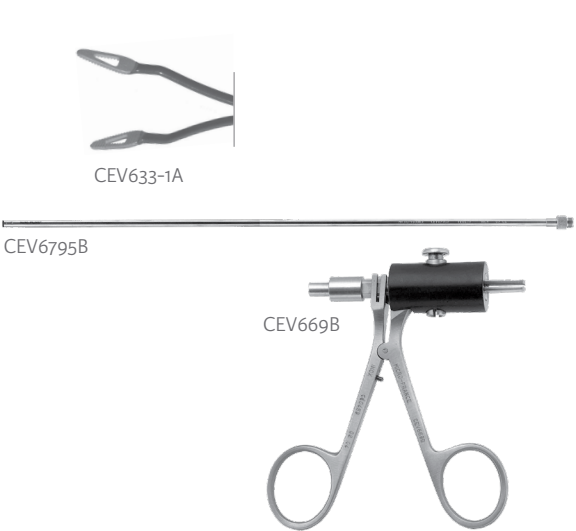


## Modular Instruments

5mm Diameter

### Bipolar Forceps , 310mm Working Length

Reference	Description
CEV633-1A	Jaw Insert; Botella Triangle Fenestrated Forceps
CEV6795B	Non-Insulated Tube
CEV669B	Bipolar Angled Handle



## Modular Instruments

5mm Diameter, 310mm Working Length

### Monopolar Forceps – Jaw Inserts\*

Reference	Description
CEV642-1	Delaitre Dissector, Curved, 20mm
CEV532I	Short Dissector, Curved, 12mm
CEV625-1	Johann Fenestrated Forceps
CEV612-1	Manhès Cobra Grasping Forceps, Single-Action Jaws
CEV611-1	Manhès Grasping Forceps
CEV615-1	Manhès Alligator Forceps
CEV625E	Fenestrated Forceps, 20 x 5mm
CEV605GT	Insulated Scissors, Very Curved, Titanium



CEV642-1



CEV532I



CEV625-1



CEV612-1



CEV611-1



CEV615-1



CEV625E



CEV605GT

### Monopolar Instruments – Tubes, 310mm Working Length

Reference	Description
CEV649-5B	Insulated Black
CEV647B5	Insulated Blue
CEV648B5	Insulated Green
CEV649B5	Non-Insulated*
CEV649C5	Disposable Sheath, Black, 3-pack*



CEV649-5B



CEV647B5



CEV648B5



CEV649B5



CEV649C5

### Monopolar Instruments – Handles

Reference	Description
CEV10395D	Monopolar Angled Handle for 5mm Insulated Rotatable Tube
CEV10195C	Rotatable Monopolar Angled Handle with Internal Ratchet



CEV10395D



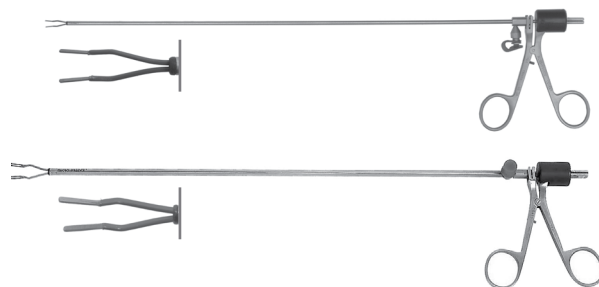
CEV10195C

\*Jaw inserts, tubes, and handles in this section are interchangeable.  
Non-insulated tube CEV649B5 must be used with disposable sheath CEV649C5.

## Standard Instruments

### Bipolar Forceps

Reference	Description
CEV397	Bipolar Forceps with Angled Handle, 3.5mm Diameter, 335mm Length
CM131	Manhès Bipolar Forceps with Angled Handle, 5mm Diameter, 360mm Length



### Monopolar Forceps, 335mm Working Length

Reference	Description
CM107	Manhès Monopolar Curette Forceps with Angled Handle, 5 x 12 mm Jaws



### Monopolar Forceps, 335mm Working Length

Reference	Description
CM112	Manhès Monopolar Cobra Forceps with Angled Handle



### Monopolar Probe, 320mm Working Length

Reference	Description
CM109	Manhès Monopolar Probe, 5mm Diameter



Standard Instruments

5mm Diameter

Probe, 450mm Working Length

Reference	Description
CEV204G45	Graduated Round Probe



Scissors, 355mm Working Length

Reference	Description
CM106	Manhès Delicate Serrated Straight Scissors with Angled Handle



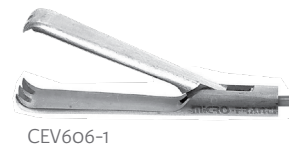
Modular Instruments

10mm Diameter, 310mm Working Length

Jaw Inserts\*

Reference	Description
CEV606-1	Museux Grasping Forceps
CEV602-1	Delaitre Babcock insert for Tube

\*Jaw inserts, non-insulated tube, and handles in this section are interchangeable.



CEV606-1



CEV654I

Non-Insulated Tube

Reference	Description
CEV649X5	Stainless Steel



CEV649X5

Handles

Reference	Description
CEV102910R	Angled Handle with Ratchet for Rotatable Non-Insulated 5mm and 10mm Tubes



CEV102910R

Cables

Monopolar

Reference	Description	Qty
CP391E	For Erbe Generators, 3.5 M	1
CP391M	For Martin - Lamidey Generators, 3.5 M	1
CP391V	For Valleylab Generators, 3.5 M	1

Bipolar

Reference	Description	Qty
CP393-3	For Erbe, Storz, and Wolf Generators, 4.5 M	1
CP393-4	For Martin, Berchtold, and Aesculap Generators, 4.5 M	1
CP393-2	For Valleylab and Lamidey Generators, 4.5 M	1

## Trocars

### Standard, 5mm Diameter

#### Valve Heads

Reference	Description
CEV177A5	Valve Head, Magnetic
CEV127T	Valve Head, Silicone



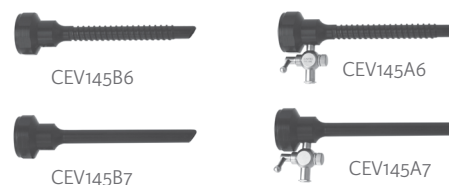
#### Tips, 134mm Working Length

Reference	Description
CEV145A3	Sharp Tip
CEV145A5	Smooth Conical Tip



#### Cannulae

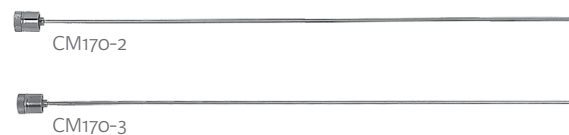
Reference	Description
CEV145B6	Threaded Cannula, 80mm Long
CEV145A6	Threaded Cannula with Stopcock, 80mm Long
CEV145B7	Smooth Cannula, 80mm Long
CEV145A7	Smooth Cannula with Stopcock, 80mm Long



## Mintz Trocars

#### Tips

Reference	Description
CM170-2	Sharp Tip, 240 mm Long
CM170-3	Blunt Tip, 240 mm Long



#### Cannulae

Reference	Description
CM170-1	Smooth Cannula, 240 mm Long, 2.5 mm Diameter



## Trocar Accessories

#### Monopolar

Reference	Description	Qty
CEV179A5	Replacement Valves for Magnetic Head CEV177A5	6
CEV125P6	White Seal for Trocar Valve, 3.5mm & 5mm Diameter	6
CEV105P6	Sealing Caps for 5mm Diameter Trocar Heads, Blue	6
CEV60-120	Insufflation Needle with Luer-Lock, 120mm L	1
CEV155	Reduction Sleeve from 10mm to 5mm Diameter, 135mm Length	1

The MicroFrance® brand is a premier line of ENT instruments, designed with world-renowned ENT surgeons to facilitate new techniques and improve patient outcomes.

Availability of these products might vary from a given country or region to another, as a result of specific local regulatory approval or clearance requirements for sale in such country or region.

- Non contractual document. The manufacturer reserves the right, without prior notice, to modify the products in order to improve their quality.
- Warning: Applicable laws restrict these products to sale by or on the order of a physician.
- Consult product labels and inserts for any indication, contraindications, hazards, warnings, precautions, and instructions for use.

For more information or to place an order, please contact:

United States, Canada, Asia, Pacific, Latin America

USA 800-654-2873 ▪ 888-980-7742 fax

International +1 609-936-5400 ▪ +1 609-750-4259 fax

[integralife.com/contact](http://integralife.com/contact)

