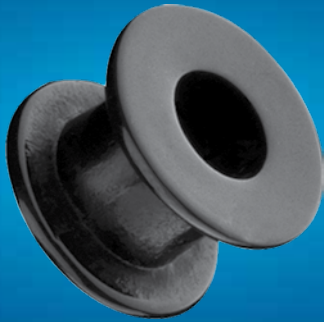
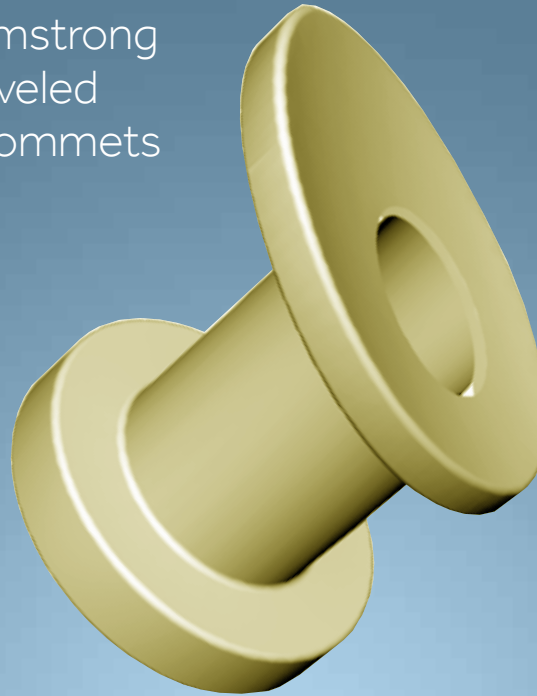


# VENTILATION TUBE CATALOG

Reuter  
Bobbins



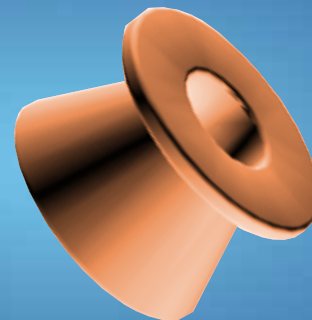
Armstrong  
Beveled  
Grommets



Paparella-Type Vent Tubes



Baxter  
Beveled  
Buttons



**Medtronic**

# Microgel™

## Surface-Enhanced Silicone Vent Tubes

### Reduces bacterial adherence by more than 90%

Myringotomy tube failure and premature extrusion can often be linked to the adherence and proliferation of bacteria on the surface of the material. Silicone substrates are especially prone to bacterial attachment because of their inherent surface morphology.<sup>1</sup>

Microgel™ Surface-Enhanced Silicone Vent Tubes have a modified polyvinylpyrrolidone (PVP) hydrogel coating. The patented Microgel process increases the surface energy of silicone, reducing the attachment of microbial pathogens.<sup>2</sup> Bacterial adherence assays have shown that the Microgel surface enhancement reduces the occurrence of bacterial adherence by more than 90%.

# Activent™

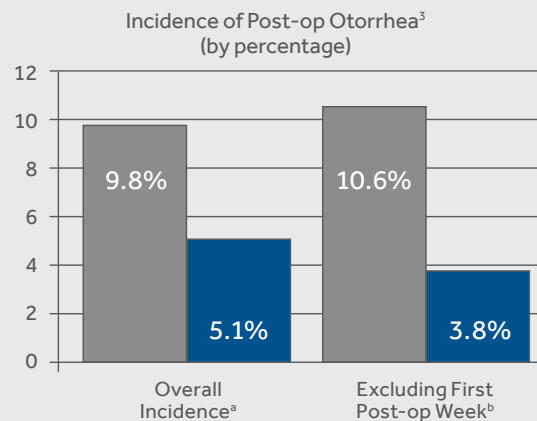
## Antimicrobial Ventilation Tubes

### Demonstrated effective at reducing postoperative otorrhea.<sup>3,4</sup>

Activent™ antimicrobial ventilation tubes inhibit growth of bacteria that can contribute to secondary infections and postoperative otorrhea.<sup>3,4</sup>

Made of silver oxide-impregnated silicone or fluoroplastic, Activent™ antimicrobial ventilation tubes have a proven bacteriocidal/bacteriostatic effect. In vitro tests show a clear zone of bacterial inhibition around Activent antimicrobial ventilation tubes on plates inoculated with both a wide spectrum of bacteria and ones common in middle ear infections.<sup>5</sup>

In clinical studies, the incidence of post-op otorrhea was almost halved for ears implanted with Activent™ antimicrobial tubes as compared to conventional tubes.<sup>3,4</sup> Activent antimicrobial ventilation tubes are available in silicone or fluoroplastic, in a variety of short- and long-term styles to meet patient needs.



Gray=Control  
Blue=Activent™

<sup>a</sup>Overall incidence of otorrhea observed on post-operative visits was 9.8% in ears with control tubes versus 5.1% incidence in ears with Activent™ antimicrobial ventilation tubes (P=0.010).

<sup>b</sup>Excluding the first post-operative week, the incidence of otorrhea observed on post-operative visits was 10.6% in ears with control tubes versus 3.8% in ears with Activent antimicrobial ventilation tubes (P=0.002).

# Temporary Tubes

## Armstrong Beveled Grommets

Designed by Beverly W. Armstrong, MD, Charlotte, NC



Material	Feature	Color	RT	Qty	ID	IFD	Product
Activent™ FLPL	Membrane	●	INT	5	1.14	3.5	1030030
Activent™ Silicone		●	INT	5	1.14	3.5	1026055
Activent Silicone		●	INT	5 pairs	1.14	3.5	1046055
Microgel™	Tab	●	INT	5	1.14	3.5	25501
Microgel	Tab	●	INT	5 pairs	1.14	3.5	25502
FLPL		●	INT	5	1.14	3.5	1010030
FLPL		●	INT	50	1.14	3.5	1010031
FLPL	Wire	●	INT	5	1.14	3.5	1010035
Silicone		●	INT	5	1.14	3.5	1010055
Silicone		●	INT	50	1.14	3.5	1010056
Silicone	Tab	●	INT	5	1.14	3.5	24502
Firm Silicone	Tab	●	INT	5	1.14	3.5	24501
H/C-Flex™		●	INT	5	1.14	3.5	1056032
H/C-Flex		●	INT	5 pairs	1.14	3.5	1066032
H/C-Flex		●	INT	50	1.14	3.5	1076032

## Armstrong Beveled Grommets, Modified

Designed by Beverly W. Armstrong, MD, Charlotte, NC



Material	Feature	Color	RT	Qty	ID	IFD	Product
Activent™ FLPL		●	INT	5	1.14	3.5	1030170
Microgel™		●	INT	5	1.14	3.5	1081101
Microgel		●	INT	5 pairs	1.14	3.5	1081102
FLPL		●	INT	5	1.14	3.5	1010170
FLPL		●	INT	5 pairs	1.14	3.5	1040045
FLPL		●	INT	50	1.14	3.5	1010171
FLPL		○	INT	5	1.14	3.5	1014242
FLPL		○	INT	5 pairs	1.14	3.5	1040024
FLPL		○	INT	50	1.14	3.5	1014243
FLPL	Oval and Semi-Flat	○	INT	5	1.14	3.5	14421

## Armstrong Beveled Straight Shanks

Designed by Beverly W. Armstrong, MD, Charlotte, NC



Material	Color	RT	Qty	ID	IFD	L	Product
Activent™ Silicone	●	INT	5	1.14	3.60	7.00	1026140
FLPL	●	INT	5	1.14	3.60	7.00	1010000
Silicone	●	INT	5	1.14	3.60	7.00	1010040
Silicone	●	INT	5	1.14	3.60	10.00	1010045

## Armstrong V Grommets

Designed by Beverly W. Armstrong, MD, Charlotte, NC



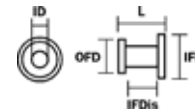
Material	Color	RT	Qty	ID	IFD	Product
H/C-Flex™	●	ST	5	1.14	2.1	1056033
H/C-Flex	●	ST	5 pairs	1.14	2.1	1066033

## Armstrong V Tubes

Designed by Beverly W. Armstrong, MD, Charlotte, NC



Material	Color	RT	Qty	ID	L	Product
Activent™ FLPL	●	INT	5	1.14	4.50	1036121
FLPL	○	INT	5	1.14	4.50	1056121
FLPL	○	INT	5 pairs	1.14	4.50	1066121
FLPL	○	INT	5	1.14	7.50	1056120
FLPL	○	INT	5 pairs	1.14	7.50	1066120
H/C Flex™	●	INT	5	1.14	4.50	1056031



All dimensions are approximate.

ID = Inner Diameter OFD = Outer Flange Diameter  
 IFD = Inner Flange Diameter IFDis = Interflange Distance  
 L = Length FL = Flange Length

## Baxter Beveled Buttons

Designed by David Baxter, RN, Boston, MA



Material	Color	RT	Qty	ID	IFD	L	Product
Activent™ FLPL	●	INT	5	1.27	3.0	2.1	34611
Activent™ Silicone	●	ST	5	1.27	2.6	2.1	26631
FLPL	○	ST	5	0.97	2.3	1.6	14621
FLPL	○	ST	5 pairs	0.97	2.3	1.6	14622
FLPL	○	INT	5	1.27	3.0	2.1	14611
FLPL	○	INT	5 pairs	1.27	3.0	2.1	14612
Firm Silicone	●	ST	5	1.27	2.6	2.1	24631
Firm Silicone	●	ST	5 pairs	1.27	2.6	2.1	24632

## Baxter Beveled T-Grommets

Designed by David Baxter, RN, Boston, MA

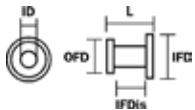


Material	Color	RT	Qty	ID	FL	L	Product
Firm Silicone	●	LT	5	1.27	9.5	3.0	24651
Firm Silicone	●	LT	5 pairs	1.27	9.5	3.0	24652

## Beveled Bobbins



Material	Color	RT	Qty	ID	Product
FLPL	○	INT	5	1.14	1056179



All dimensions are approximate.

ID = Inner Diameter OFD = Outer Flange Diameter  
 IFD = Inner Flange Diameter IFDis = Interflange Distance  
 L = Length FL = Flange Length

## Cohen T-Grommets

Designed by Richard Cohen, MD, Grants Pass, OR



Material	Color	RT	Qty	ID	FL	Product
Microgel™ Silicone	●	LT	5	1.14	9.1	25691
Firm Silicone	●	LT	5	1.14	9.1	24701

## Donaldson-Type Tubes



Material	Feature	Color	RT	Qty	ID	IFD	IFDis	Product
Activent™ Silicone		●	ST	5	1.14	2.3	0.90	1026020
Activent Silicone		●	ST	5 pairs	1.14	2.3	0.90	1046020
FLPL		●	ST	5	1.14	2.3	0.90	1015101
FLPL	Wire	●	ST	5	1.14	2.3	0.90	1015201
FLPL		●	ST	5 pairs	1.4	2.3	0.90	1015102
Silicone		●	ST	5	1.14	2.3	0.90	1013020
Silicone		●	ST	5 pairs	1.14	2.3	0.90	1040009
Silicone		●	ST	50	1.14	2.3	0.90	1013021
Silicone	Membrane	●	ST	5	1.14	2.3	0.90	1012015
Silicone	Tab	●	ST	5	1.14	2.3	0.90	1013015
Firm Silicone		●	ST	5 pairs	1.14	2.3	0.90	24152
Firm Silicone		●	ST	5	1.14	2.3	0.90	24151
Firm Silicone	Tab	●	ST	5	1.14	2.3	0.90	24161
C-Flex™		●	ST	5	1.14	2.3	0.76	1056010

## Goode T-Grommets

Endorsed by Richard L. Goode, MD, Palo Alto, CA



Material	Feature	Color	RT	Qty	ID	FL	IFDis	Product
Activent™ Silicone		●	LT	5	1.27	8.5	2.50	1026011
Silicone		●	LT	5	1.27	8.5	2.50	1016020
Silicone	Membrane	●	LT	5	1.27	8.5	2.50	1016025

## Goode T-Tubes™

Designed by Richard L. Goode, MD, Palo Alto, CA



Material	Color	RT	Qty	ID	FL	L	Product
Activent™ Silicone	●	LT	5	1.14	9.5	12.0	1026010
Microgel™ Silicone	●	LT	5	1.14	9.8	12.0	1087701
Microgel Silicone	●	LT	5 pairs	1.14	9.8	12.0	1087702
Silicone	●	LT	5	1.14	9.5	12.0	1016010
Silicone	●	LT	5 pairs	1.14	9.5	12.0	1040001
Silicone	●	LT	50	1.14	9.5	12.0	1016011
Firm Silicone	●	LT	5	1.14	6.0	6.0	24751
Firm Silicone	●	LT	5 pairs	1.14	6.0	6.0	24752
Firm Silicone	●	LT	5	1.14	9.5	12.0	1016035
Firm Silicone	●	LT	5 pairs	1.14	9.5	12.0	24712
C-Flex™	●	LT	5	1.14	6.5	6.0	1056016
C-Flex	●	LT	5 pairs	1.14	6.5	6.0	1066016
C-Flex	●	LT	5	1.14	8.0	9.0	1056019
C-Flex	●	LT	5	1.14	9.0	12.0	1056015

## Goode T-Tubes, Modified



Material	Color	RT	Qty	ID	FL	L	Product
Activent™ Silicone	●	LT	5	1.27	9.5	4.5	1026040
Silicone	●	LT	5	1.27	5.8	6.7	24771
Silicone	●	LT	5 pairs	1.27	5.8	6.7	24772
Firm Silicone	●	LT	5	1.27	9.5	4.5	1016040
Firm Silicone	●	LT	5 pairs	1.27	9.5	4.5	1040002
Firm Silicone	●	LT	50	1.27	9.5	4.5	1016041

## Hubbard Airplane Tube

Endorsed by Ron Hubbard, MD, Memphis, TN;

Acknowledgement to Joseph B. Touma, MD, Huntington, WV



Material	Color	RT	Qty	ID	IFD	Product
FLPL	○	ST	5	0.76	2.0	1056170

## Moretz Tab Vent Tubes

Endorsed by William H. Moretz, Jr., MD, Augusta, GA



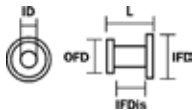
Material	Feature	Color	RT	Qty	ID	IFDis	Product
Activent™ FLPL		●	ST	5	1.27	1.00	1036177
FLPL		○	ST	5	1.27	1.00	1056177
FLPL		○	ST	5 pairs	1.27	1.00	1066177
Microblue Titanium		●	ST	5 pairs	1.27	1.00	14642
Tytan™ Titanium		●	ST	5	0.76	1.00	1056108
Tytan Titanium		●	ST	5 pairs	0.76	1.00	1066108
Tytan Titanium		●	ST	5	1.02	1.00	1056104
Tytan Titanium		●	ST	5	1.27	1.00	1056107
Tytan Titanium		●	ST	5 pairs	1.27	1.00	1066107
Tytan Titanium	Wire Twist	●	ST	5 pairs	1.27	1.00	1066113
H/C-Flex™		●	ST	5	1.27	0.75	1056705

## Paparella-Type Vent Tubes

Designed by Michael M. Paparella, MD, Minneapolis, MN



Material	Feature	Color	RT	Qty	ID	IFD	IFDis	Product
Activent™ Silicone	Notch & Tab	●	ST	5	1.14	2.40	1.10	1026001
Activent Silicone	Notch & Tab	●	ST	5 pairs	1.14	2.40	1.10	1046001
Activent Silicone	Notch & Tab	●	INT	5	1.52	4.45	1.15	1026045
Microgel™	Notch & Tab	●	ST	5	1.02	2.50	1.00	25441
Microgel	Notch & Tab	●	ST	5 pairs	1.02	2.50	1.00	25442
Microgel	Notch & Tab	●	ST	50	1.02	2.50	1.00	25443
Microgel		●	INT	5	1.14	--	--	1082201
Microgel		●	INT	5 pairs	1.14	--	--	1082202
Microgel		●	INT	50	1.14	--	--	1082203
FLPL	Tab	○	ST	5 pairs	1.02	2.50	1.00	14521
Silicone	Notch & Tab	●	ST	5	1.14	2.40	1.10	1025001
Silicone	Notch & Tab	●	ST	5 pairs	1.14	2.40	1.10	1040006
Silicone	Notch & Tab	●	ST	50	1.14	2.40	1.10	1025002
Silicone	Notch & Tab	●	ST	50 pairs	1.14	2.40	1.10	1040019
Silicone	Notch	●	ST	5	1.14	2.40	1.10	1025005
Silicone	Membrane	●	INT	5	1.14	4.30	0.85	1012010
Silicone	Notch & Tab	●	INT	5	1.52	4.45	1.15	1025045
Silicone	Notch	●	INT	5	1.52	4.45	1.15	1025040
Firm Silicone	Notch & Tab	●	ST	5	1.02	2.50	1.00	24441
Firm Silicone	Notch & Tab	●	ST	5 pairs	1.02	2.50	1.00	24442
Firm Silicone	Notch	●	ST	5	1.02	2.50	1.00	24451
Firm Silicone	Notch	●	ST	5 pairs	1.02	2.50	1.00	24452
Firm Silicone	Notch & Tab	●	INT	5	1.27	4.30	0.90	24461
C-Flex™	Tab	●	ST	5	1.02	2.50	1.00	1056005
C-Flex	Tab	●	ST	5 pairs	1.02	2.50	1.00	1066005



All dimensions are approximate.

ID = Inner Diameter OFD = Outer Flange Diameter  
 IFD = Inner Flange Diameter IFDis = Interflange Distance  
 L = Length FL = Flange Length

## Plain Straight Shanks



## Reuter Bobbins

Designed by S. Harold Reuter, MD, Houston, TX



Material	Color	RT	Qty	ID	IFD	L	Product
Activent™ FLPL	●	ST	5	1.14	2.75	7.00	1038050
FLPL	●	ST	5	0.89	2.75	7.00	1019101
FLPL	●	ST	5	1.14	2.20	7.00	1019201
FLPL	●	ST	5	1.14	2.75	7.00	1019301
FLPL	○	ST	5	0.89	2.10	7.00	1056165
FLPL	○	ST	5 pairs	0.89	2.10	7.00	1066165
FLPL	○	ST	5	1.14	2.10	7.00	1056167
FLPL	○	ST	5	1.14	2.30	12.00	14351

Material	Feature	Color	RT	Qty	ID	IFD	IFDis	Product
Activent® FLPL	No Holes	●	ST	5	1.02	2.6	1.0	1036162
Activent FLPL	Holes	●	ST	5	1.14	2.6	1.0	1037000
Activent FLPL	No Holes	●	ST	5	1.14	2.6	1.0	1037005
FLPL	No Holes	○	ST	5	1.02	2.6	1.0	1056162
FLPL	No Holes	○	ST	5	1.02	2.7	1.1	14121
FLPL	No Holes	○	ST	5 pairs	1.02	2.7	1.1	14122
FLPL	No Holes	○	ST	5	1.14	2.7	1.1	14131
FLPL	No Holes	○	ST	5 pairs	1.14	2.7	1.1	14132
FLPL	No Holes	●	ST	5	1.14	2.6	1.0	1010201
FLPL	No Holes	●	ST	5 pairs	1.14	2.6	1.0	1010202
FLPL	No Holes	●	ST	50	1.14	2.6	1.0	1010203
FLPL	Holes & Wire	●	ST	5	1.14	2.6	1.0	1010301
FLPL	Holes	●	ST	50	1.14	2.6	1.0	1010103
Tytan® Titanium	No Holes	○	ST	5	1.02	2.7	1.0	1056110
Tytan Titanium	Holes	○	ST	5	1.02	2.7	1.0	1066110
Tytan Titanium	No Holes	○	ST	5	1.14	2.7	1.0	1056112
Tytan Titanium	No Holes	○	ST	5 pairs	1.14	2.7	1.0	1066112
Tytan Titanium	No Holes	●	ST	5	1.27	2.7	1.0	16221
Tytan Titanium	No Holes	●	ST	5 pairs	1.27	2.7	1.0	16222
Titanium	Holes & Flange	○	ST	5	1.02	2.7	1.0	16111
Titanium	Holes	○	ST	5	1.14	2.6	1.0	1027060
Titanium	No Holes	○	ST	5	1.27	2.6	1.0	1027070
Stainless Steel Matte Finish Titanium	Holes	●	ST	5 pairs	1.14	2.6	1.0	1027017
Stainless Steel Matte Finish	Holes	○	ST	5 pairs	1.14	2.6	1.0	1040004
Stainless Steel	Holes	○	ST	5	1.02	2.7	1.0	14401
Stainless Steel	Holes & Wire	○	ST	5	1.14	2.6	1.0	1027040
Stainless Steel	Holes	○	ST	5	1.14	2.6	1.0	1027015

## Pope Beveled Grommets

Designed by Thad Pope, MD, Crawfordsville, IN



Material	Feature	Color	RT	Qty	ID	IFD	IFDis	Product
Activent™ FLPL		●	INT	5	1.14	3.6	1.3	1035004
FLPL		●	INT	5	1.14	3.6	1.3	1025004
FLPL		●	INT	5 pairs	1.14	3.6	1.3	1040014
FLPL	Dispenser	●	INT	50	1.14	3.6	1.3	1025007
FLPL	Wire	●	INT	5	1.14	3.6	1.3	1025006
H/C-Flex™		●	INT	5	1.14	3.6	1.0	1056036
H/C-Flex		●	INT	5 pairs	1.14	3.6	1.0	1066036
H/C-Flex	Tail	●	INT	5 pairs	1.14	3.6	1.0	1066039

## Reuter Bobbins (continued)

Designed by S. Harold Reuter, MD, Houston, TX



Material	Feature	Color	RT	Qty	ID	IFD	IFDis	Product
Stainless Steel		●	ST	50	1.14	2.6	1.0	1027016
Stainless Steel	Holes	●	ST	5	1.27	2.6	0.5	1027010
Stainless Steel	Holes	●	ST	5	1.27	2.7	1.0	14051

## Rube T-Grommet

Designed by William Rubenstein, MD, Houston, TX



Material	Feature	Color	RT	Qty	ID	FL	Product
Firm Silicone	Tab	●	LT	5	1.14	6.5	24621

## Shah-Type Ventilation Tubes

Designed by N. Shah, FRCS, DLO, London, England



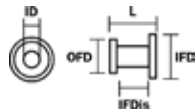
Material	Feature	Color	RT	Qty	ID	IFDis	Product
Activent® FLPL		●	INT	5	1.14	1.58	1038030
FLPL	Mini	○	INT	5	0.76	1.00	14311
FLPL		●	INT	5	1.14	1.58	1018100
FLPL	Wire	●	INT	5	1.14	1.58	1018101
FLPL	Wire	●	INT	5	1.14	2.20	1056174

## Sheehy-Type Collar Buttons

Designed by James L. Sheehy, MD, Los Angeles, CA



Material	Feature	Color	RT	Qty	ID	IFD	IFDis	Product
Activent™ FLPL		●	INT	5	1.27	3.0	1.55	1038040
Activent™ Silicone		●	INT	5	1.27	2.9	1.30	1046145
Activent Silicone		●	INT	5 pairs	1.27	2.9	1.30	1026145
Activent Silicone		●	INT	50	1.27	2.9	1.30	1026146
Microgel™		●	INT	5	1.27	—	—	1083301
Microgel		●	INT	5 pairs	1.27	—	—	1083302
Microgel		●	INT	50	1.27	—	—	1083303
FLPL		○	INT	5	1.27	3.0	1.52	14141
FLPL		○	INT	5 pairs	1.27	3.0	1.52	14142
FLPL		○	INT	5	1.27	3.1	1.50	1056160
FLPL		○	INT	5 pairs	1.27	3.1	1.50	1066160
FLPL		●	INT	5	1.27	3.0	1.55	1013301
FLPL		●	INT	5 pairs	1.27	3.0	1.55	1013302
FLPL		●	INT	50	1.27	3.0	1.55	1013303
FLPL		●	INT	100	1.27	3.0	1.57	1040030
Silicone		●	INT	5	1.27	2.9	1.30	1028145
Silicone		●	INT	50	1.27	2.9	1.30	1028146
Tytan™ Titanium		●	INT	5	1.27	3.1	1.50	1056114
H/C-Flex™		●	INT	5	1.27	3.1	1.50	1056037
H/C-Flex		●	INT	5 pairs	1.27	3.1	1.50	1066037



All dimensions are approximate.

ID = Inner Diameter OFD = Outer Flange Diameter  
 IFD = Inner Flange Diameter IFDis = Interflange Distance  
 L = Length FL = Flange Length



## Shepard Grommets

Designed by Marvin G. Shepard, MD, Dallas, TX



Material	Feature	Color	RT	Qty	ID	IFD	Product
Activent™ FLPL	Wire	●	ST	5	1.14	2.40	1038012
Activent™ Silicone	Tail	●	ST	5	1.14	2.30	1026025
Activent Silicone	Tail	●	ST	5 pairs	1.14	2.30	1046025
Microgel™	Tab	●	ST	5	1.02	2.30	1086601
FLPL		○	ST	5	1.02	2.50	1056155
FLPL		○	ST	5 pairs	1.02	2.50	1066155
FLPL		○	ST	5	1.14	2.50	1056154
FLPL	Wire	○	ST	5	1.14	2.50	1056157
FLPL		●	ST	5	1.02	2.40	1016301
FLPL	Wire	●	ST	5	1.02	2.40	1016501
FLPL		●	ST	5 pairs	1.14	2.40	1016102
FLPL	Wire	●	ST	5	1.14	2.40	1016201
FLPL	Wire	●	ST	50	1.14	2.40	1016203
FLPL	Tab	●	ST	5	1.14	2.40	1016101
FLPL	Tab	●	ST	50	1.14	2.40	1016103
FLPL		●	ST	5 pairs	1.14	2.50	1066154
FLPL	Tail	●	ST	5	1.14	2.40	1028010
FLPL	Tab	●	ST	5	1.14	2.40	1028015
Silicone	Tail	●	ST	5	1.14	2.30	1028025
Silicone	Tail	●	ST	50	1.14	2.30	1028026

## Siegel T-Tubes



Material	Color	RT	Qty	ID	FL	L	Product
Silicone	●	INT	5	1.14	4.0	7	24811
Silicone	●	INT	5 pairs	1.14	4.0	7	24812

## Soileau Tytan™ Titanium Ventilation Tubes

Endorsed by James S. Soileau, MD, Gonzales, LA



Material	Color	RT	Qty	ID	IFD	Product
Tytan™ Titanium	○	ST	5	1.27	2.75	1056111
Tytan Titanium	○	ST	5 pairs	1.27	2.75	1066111

## Spoon Bobbins



Material	Feature	Color	RT	Qty	ID	IFD	Product
Tytan™ Titanium		○	ST	5	1.02	2.70	1056109
Tytan Titanium		○	ST	5	1.27	2.70	1056106
Tytan Titanium		○	ST	5 pairs	1.27	2.70	1066106

## Touma Beveled T-Grommet

Endorsed by Joseph B. Touma, MD, Huntington, WV



Material	Feature	Color	RT	Qty	ID	IFD	Product
Activent™ Silicone	Tab	●	INT	5	1.27	5.0	1026014

## Touma T-Type Grommets

Endorsed by Joseph B. Touma, MD, Huntington, WV



Material	Color	RT	Qty	ID	IFD	Product
Activent™ Silicone	●	INT	5	1.14	5.0	1026012
C-Flex™	●	INT	5	1.14	5.0	1056012
C-Flex	●	INT	5 pairs	1.14	5.0	1066012

## T-Type Vent Tubes



Material	Color	RT	Qty	ID	FL	L	Product
C-Flex™	●	INT	5	1.14	4.8	6	1056018
C-Flex	●	INT	5 pairs	1.14	4.8	6	1066018

## Umbrella Ventilation Tubes



Material	Feature	Color	RT	Qty	ID	L	Product
Silicone	Tab	●	INT	5	1.02	2.2	1016030

## Venturi™ Style Ventilation Tubes

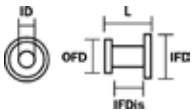


Material	Feature	Color	RT	Qty	ID	IFD	IF-Dis	Product
Titanium	Reuter Bobbin	●	ST	5	1.02	2.5	1.0	1070011
Titanium	Reuter Bobbin	●	ST	5	1.27	2.5	1.0	1070031
Titanium	Reuter Bobbin	●	ST	5 pairs	1.27	2.5	1.0	1070032

## V-T Grommet Ventilation Tubes



Material	Color	RT	Qty	ID	IFD	IFDis	Product
Microgel™	●		5	1.27	4.5	1.3	1084401
C-Flex™	●		5	1.27	4.5	1.3	1002341
C-Flex	●		50	1.27	4.5	1.3	1064403



All dimensions are approximate.

ID = Inner Diameter OFD = Outer Flange Diameter  
 IFD = Inner Flange Diameter IFDis = Interflange Distance  
 L = Length FL = Flange Length

# Permanent and Specialty Tubes

## Hoffman Permanent Vent Tubes



Material	Feature	Color	RT	Qty	ID	L	Product
Titanium with Hydroxylapatite	FLPL Liner	●○	P	1	1.65	8.3	1028080
Titanium with Hydroxylapatite	FLPL Liner	○	P	5	1.25	13.46	1028081

## Silverstein Permanent Aeration Tubes (SPAT)

Endorsed by Herbert Silverstein, MD, Sarasota, FL



Material	Feature	Color	RT	Qty	ID	FL	L	Product
Silicone		●○	P	5	1.14	3.5	7	1028070
Silicone	FLPL Stylet	●○	P	5	1.14	3.5	12	1028065

## Pediatric Ventilation Tubes

1056108 Endorsed by William H. Moretz, Jr., MD, Augusta, GA

14311 Designed by N. Shah, FRCS, DLO, London, England

1056101, 1056102, and 1056159 Endorsed by M. Coyle Shea, MD, Memphis, TN



Tube Style	Material	Color	RT	Qty	ID	IFD	Product
	Microblue™ Titanium	●	ST	5	0.76	2.0	16191
	Microblue™ Titanium	●	ST	100	1.24	2.65	16223
Pappas	Tiny Tytan™ Titanium	●	ST	5	0.76	1.52	1056101
	Tiny Tytan Titanium	●	ST	5	0.76	2.0	1056102
Moretz Tab	Tiny Tytan Titanium	●	ST	5	0.76	1.5	1056108
Moretz Tab	Tiny Tytan Titanium	●	ST	5 pairs	0.76	1.5	1066108
Mini Shah	FLPL	○	ST	5	0.76	2.0	14311
	FLPL	○	ST	5	0.76	2.0	1056159
	FLPL	○	ST	5 pairs	0.76	2.0	1066159

## Tympanic Membrane (TM) Patcher



Material	Qty	Dia	CD	Product
Silicone	1	3	0.9	1416000
Silicone	1	5	1.1	1416010
Silicone	1	7	1.3	1416020
Silicone	1	10	1.4	1416030

## Dimensions

All dimensions are approximate and subject to normal manufacturing variance.

All measurements are listed as millimeters.

ID = Inner Diameter

IFD = Inner Flange Diameter

OFD = Outer Flange Diameter

IFDis = Interflange Distance

L = Length

FL = Flange Length

DIA = Diameter

## Color

● = Black

● = Blue

○ = Clear

● = Green

● = Metallic

● = Microblue

○ = White

## References

1. Karlan MS, et al. Myringotomy tube materials: bacterial adhesion and infection. Otolaryngol Head Neck Surg. 1980; 88:783-795.
2. Dunkirk SG, Gregg ST, Duran LW, Monfils JD, Haapala JE, Marcy JA, Clapper DL, Amos RA, Guire PE. Photochemical coatings for the prevention of bacterial colonization. J Biomater Appl. 1991; 6:131-156.
3. Chole RA, MD, PhD, Hubbell, RN, MD. Antimicrobial Activity of Silastic Tympanostomy Tubes Impregnated with Silver Oxide: A Double-blind Randomized Multicenter Trial. Archives of Otolaryngology -Head and Neck Surgery.1995; 121: 562-565.
4. Gourin, CG, MD, Hubbell, RN, MD. Otorrhea After Insertion of Silver Oxide-impregnated Silastic Tympanostomy Tubes. Archives of Otolaryngology -Head and Neck Surgery.1999; 125: 446-450.
5. Independent laboratory results on file with Medtronic ENT.

Rx only. Refer to product instruction manual/package insert for instructions, warnings, precautions and contraindications.

For further information, please call Medtronic ENT at 800.874.5797 or consult Medtronic's website at [www.medtronic.com/ent](http://www.medtronic.com/ent).

# Medtronic

### Medtronic plc ENT

6743 Southpoint Drive N  
Jacksonville, FL 32216  
USA

Toll free: (800) 874-5797  
Telephone: (904) 296-9600  
Fax: (800) 678-3995

### International Telephone Numbers

**Europe HQ** Switzerland 41-21-802-7000

**Latin America HQ** 305-500-9328

Adriatic Region 385-1-488-1120

Argentina 54-11-4898-5700

Australia 1-800-668-670

Baltic Region 37-1-67560226

Belgium 32-2456-09-09

Brazil 55-11-2182-9200

Canada 1-800-268-5346

Chile 56-2-2655-5110

China 86-10-5869-8989

Colombia 57-1-742-7300

Czech Republic 420-233-059-111

France 33-470-679-800

Germany 49-2159-8149-353

Greece 30-210-67-79-099

Hong Kong 852-2919-1300

Hungary 36-188-90600

India 91-22-33074700

Israel 972-9-972-4400

Italy 39-02-24137-324

Japan 81-3-6774-4611

Korea 82-2-3404-3600

Lebanon 961-1-370-670

Luxembourg 32-2456-09-09

Malaysia 60-37-953-4800

Mexico 52-55-11-02-90-30

Netherlands 31-45-566-8800

Poland 48-22-4656900

Russian Fed. 7-495-580-73-77

Singapore 65-6436-5000

South Africa 27-11-260-9300

Spain 34-91-625-05-40

Taiwan 886-2-2183-6000

Thailand 662-232-7400

UK 44-1923-205-166