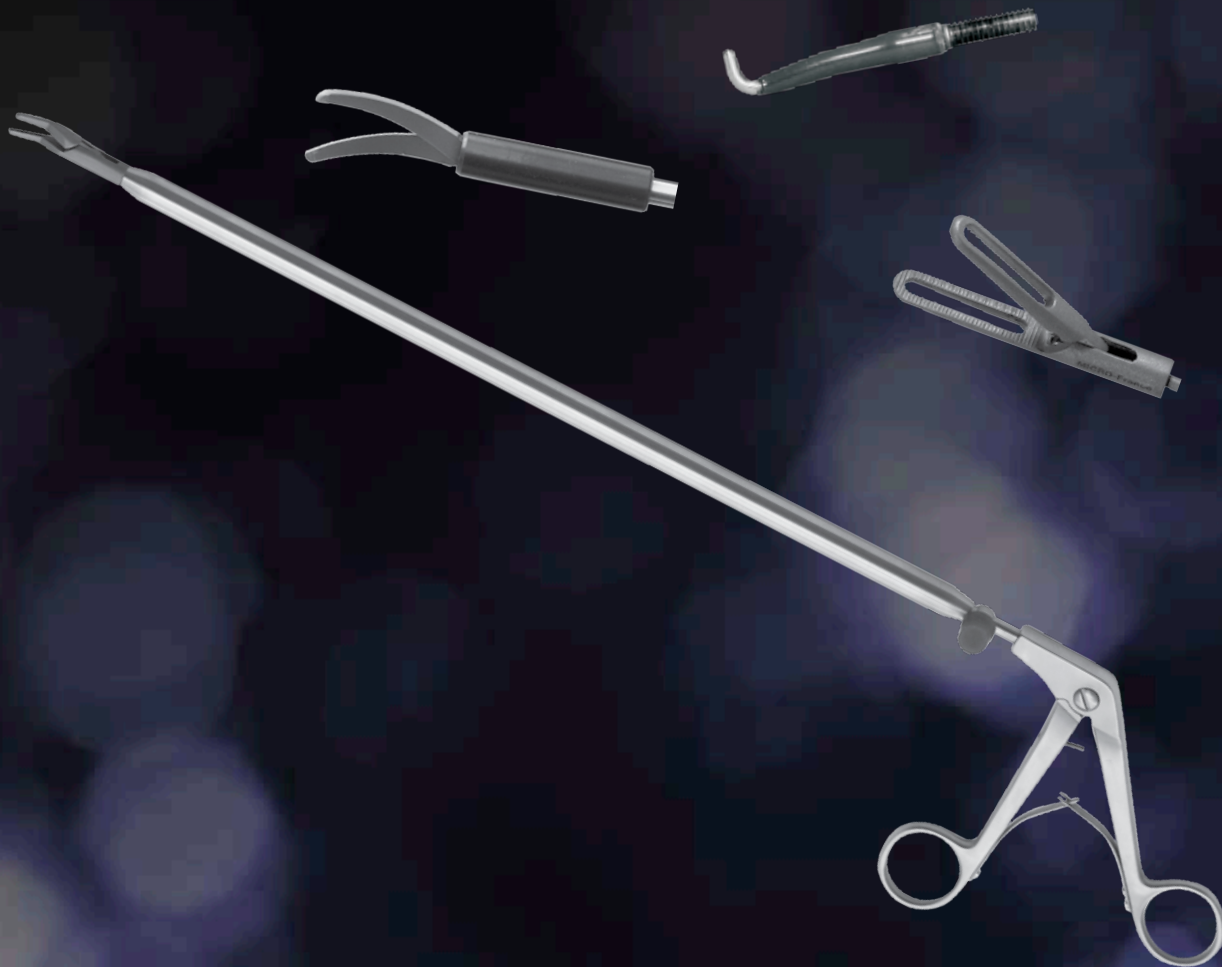


Integra[®] MicroFrance[®]

Laparoscopic Instruments for Cholecystectomy Procedures*

Designed with world-renowned surgeons, MicroFrance Laparoscopic Instruments are known for quality and precision. These instruments are designed to perform a variety of laparoscopic procedures.



*Instruments under the medical grouping can be used in other general surgical procedures.

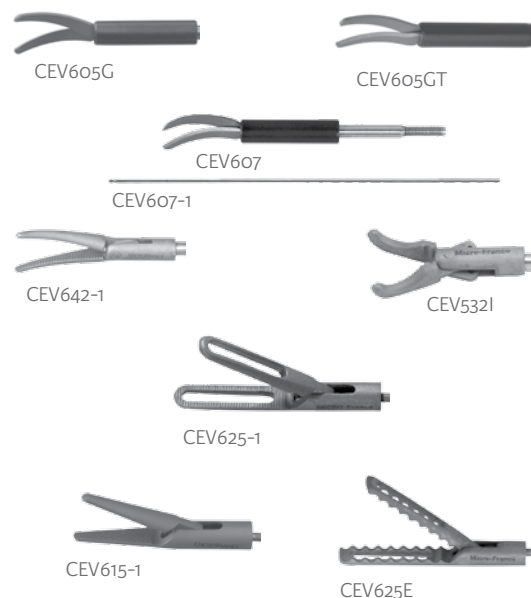
Cholecystectomy Procedures

Modular Instruments

5mm Diameter, 310mm Working Length

Monopolar Instruments – Jaw Inserts**

Reference	Description
CEV605G	Insulated Scissors, Very Curved
CEV605GT	Insulated Scissors, Very Curved, Titanium
CEV607	Insulated Scissors Tip, Very Curved
CEV607-1	Wire Insert*
CEV642-1	Delaitre Dissector, Curved, 20 mm
CEV532I	Short Dissector, Curved, 12 mm
CEV625-1	Johann Fenestrated Forceps, 20 x 5 mm Jaws
CEV615-1	Manhès Alligator Forceps, 15 mm Jaws
CEV625E	Smooth Fenestrated Forceps, 20 x 5 mm



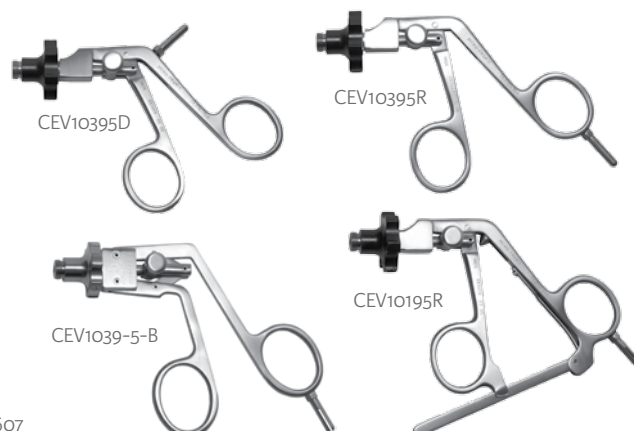
Monopolar Instruments – Tubes

Reference	Description
CEV649-5B	Insulated Black
CEV646B5	Insulated Yellow
CEV648B5	Insulated Green
CEV649B5	Tube for Sheath, Non-Insulated*
CEV649C5	Disposable Sheath, Black, 3-pack*



Monopolar Instruments – Handles

Reference	Description
CEV10395D	Rotatable Angled Handle, Non-Locking
CEV10395R	Rotatable Angled Handle
CEV1039-5-B	Rotatable Angled Handle, Non-Locking
CEV10195R	Rotatable Long Handle with Ratchet



*Instruments under the medical grouping can be used in other general surgical procedures.

**Jaw inserts, tubes, and handles in this section are interchangeable. Insulated scissors tip CEV607 must be used with wire insert CEV607-1. Non-insulated tube CEV649B5 must be used with disposable sheath CEV649C5.

Modular Instruments

5mm Diameter

Monopolar Hook 340mm

Reference	Description
CEV2295A	Jaw Insert; Hook Jaws, Size 5, 3-Pack
CEV229-1A	Round Hook Handle, 350mm Working Length



CEV2295A



CEV229-1A

Suction Irrigation 300mm

Reference	Description
CEV103-5	Tube, 300mm Working Length
CEV103AH	Handle



CEV103-5



CEV103AH

Mauras Guide Sleeve for Cholelscopy

Reference	Description
CEV449***	Guide Sleeve



CEV449

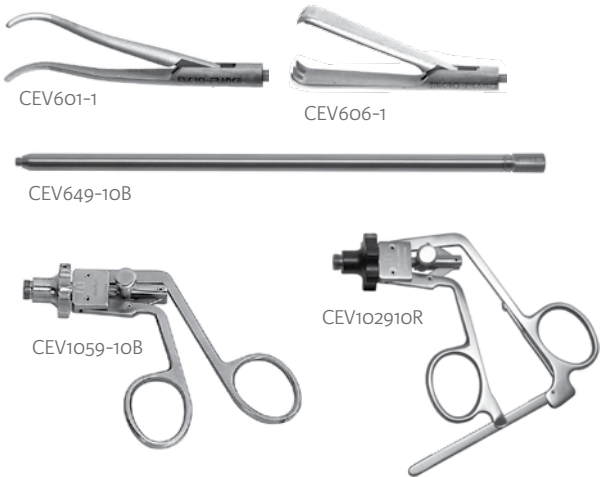
Replacement Components for Mauras Guide Sleeve

Reference	Description	Qty
CEV449G***	Interior Tube	1
CEV105P6***	Blue Sealing Cap	6

***CEV449 includes CEV449G and CEV105P6 (quantity

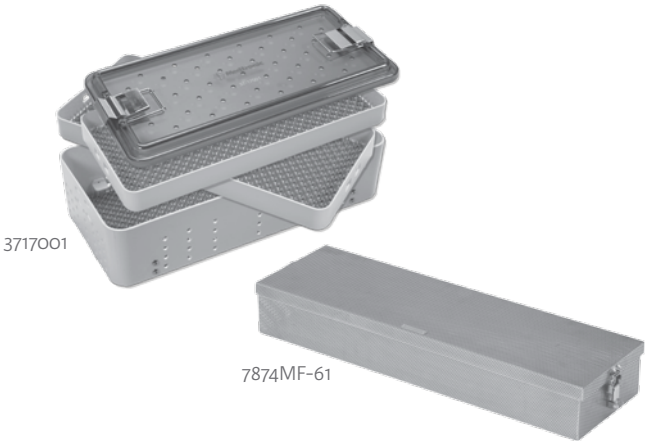
Modular Instruments
10mm Diameter

Reference	Description
CEV601-1	Jaw insert**; Delaitre Medium Curved Single-Action Dissector Jaws 310mm Working Length
CEV606-1	Jaw insert**; Museux Insert for Tube 310mm Working Length
CEV649-10B	Non-Insulated Tube 310mm Working Length
CEV1059-10B	Rotatable Angled Handle, Non-Insulated
CEV102910R	Rotatable Angled Handle with Ratchet



Instrument Trays

Reference	Description
3717001	3-Level Aluminum with Plastic Lid Tray, 53cm L x 25.5cm W x 15cm D
7874MF-61	Stainless Steel Case, 610 x 180 x 80mm



*Instruments under the medical grouping can be used in other general surgical procedures.
**Jaw inserts, non-insulated tube, and handles in this section are interchangeable.

Standard Instruments

5mm Diameter

Monopolar Hook

Reference	Description
CEV230-1	Perissat Monopolar Hook, 330mm Working Length



Needle Holder

Reference	Description
CEV700T5D	Needle-Holder with Large Handle, Ratchet Down, Carbide Jaws, 335mm Working Length



Needle

Reference	Description
CEV65	Needle with Luer-Lock, 300mm Working Length



Standard Instruments

10mm Diameter

Clip Applier, 10mm Diameter

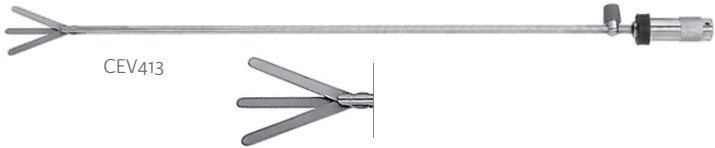
Reference	Description
CEV310	Clip Applicator with Angled Handle (Compatible with Ethicon® Titanium Tl300 and Stainless Steel LC300 LigaClips.), 335mm Working Length



Retractors

Articulated Retractor, 5mm Width

Reference	Description
CEV413	Articulated Retractor, 3 Blades, 370mm Working Length



Retractor, 5mm Width

Reference	Description
CEV419	Mosnier Double Retractor (pair) 160mm Working Length



Retractor, 20mm Width

Reference	Description
CEV418	Zimmermann Double Retractor (pair), 200mm Working Length



*Instruments under the medical grouping can be used in other general surgical procedures.

Trocars

5mm Diameter

Valve Heads

Reference	Description
CEV177A5	Valve Head, Magnetic
CEV127T	Valve Head, Silicone



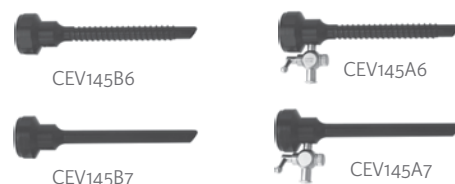
Tips

Reference	Description
CEV145A3	Sharp Tip
CEV145A5	Blunt Conical Tip



Cannulae

Reference	Description
CEV145B6	Screw Sleeve, 80mm Long
CEV145A6	Screw Sleeve with Stopcock, 80mm Long
CEV145B7	Smooth Sleeve, 80mm Long
CEV145A7	Smooth Sleeve with Stopcock, 80mm Long



10mm Diameter

Valve Heads

Reference	Description
CEV177A10	Valve Head, Magnetic
CEV127T10	Valve Head, Silicone



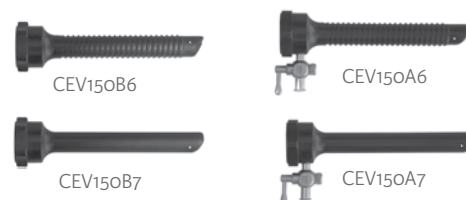
Tips

Reference	Description
CEV150-3	Sharp Tip
CEV150-4	Blunt Conical Tip



Cannulae

Reference	Description
CEV150B6	Screw Sleeve, 90mm Long
CEV150A6	Screw Sleeve with Stopcock, 90mm Long
CEV150B7	Smooth Sleeve, 90mm Long
CEV150A7	Smooth Sleeve with Stopcock, 90mm Long



Accessories

Monopolar Cables

Reference	Description	Qty
CP391E	For Erbe Generators, 3.5 M	1
CP391M	For Martin – Lamidey Generators, 3.5 M	1
CP391V	For Valleylab Generators, 3.5 M	1

Miscellaneous Accessories

CEV60-150	Insufflation Needle with Luer-Lock, 150mm L	1
CEV155	Reduction Sleeve from 10 mm to 5mm Diameter	1

5.5mm Diameter Accessories

Reference	Description	Qty
CEV179A5	Replacement Valves for Magnetic Head CEV177A5	6
CEV125Q6	White Seal for Trocar Valve, 10mm and 12mm diameter	6
CEV105P6	Sealing Caps for 5mm Diameter Trocar Heads, Blue	6

10.5mm Diameter Accessories

CEV179A10	Device for Magnetic CEV177A10	6
CEV125P6	White Seal for Trocar valve, 3.5mm and 5.5mm diameter	6
CEV110P6	Sealing Caps for 10mm Diameter Trocar Heads, Red	6

*Instruments under the medical grouping can be used in other general surgical procedures.

The MicroFrance® brand is a premier line of ENT instruments, designed with world-renowned ENT surgeons to facilitate new techniques and improve patient outcomes.

Availability of these products might vary from a given country or region to another, as a result of specific local regulatory approval or clearance requirements for sale in such country or region.

- Non contractual document. The manufacturer reserves the right, without prior notice, to modify the products in order to improve their quality.
- Warning: Applicable laws restrict these products to sale by or on the order of a physician.
- Consult product labels and inserts for any indication, contraindications, hazards, warnings, precautions, and instructions for use.

For more information or to place an order, please contact:

United States, Canada, Asia, Pacific, Latin America

USA 800-654-2873 ■ 888-980-7742 fax

International +1 609-936-5400 ■ +1 609-750-4259 fax

integralife.com/contact

